



SUITE PRICING

Effective February 01, 2025

SUITE STYLE	SQUARE FOOTAGE	PRICE (STARTING FROM)
ONE BEDROOM	550 - 560 sq. ft.	\$3,089
ONE BEDROOM BALCONY	660 sq. ft.	\$3,499
TWO BEDROOM	770 sq. ft.	\$4,149
ALL UTILITIES INCLUDED (EXCLUDING TELEPHONE)		

AMENITIES AT THE WATERFORD

Full Kitchen	Air Conditioning	Weekly Housekeeping
Custom Meal Plans	Individual Heat Control	Linen Service
Afternoon Tea with Snacks	Wi-Fi	24/7 Staffing
Special Holiday Dinners	150+ TELUS Optik TV Channels	Pet Friendly
Private Dining Room Available	Water & Power	Self Serve Laundry
Games & Billiards Room	Daily Trash Pick Up	Shuttle Bus
Patio & Gazebo	Emergency Call System	Beauty Salon on Site

ACTIVITIES AT THE WATERFORD

Gardening	Billiards	Bingo
Shuttle Bus	Games	Social Outings
Crib & Bridge Clubs	Excursions & Day Trips	Live Entertainment
Happy Hour	Walking Trails	Exercise Room
Arts & Crafts	Birthday Parties	Guest Speakers



The Waterford of Summerlea
9395 172 Street NW, Edmonton, AB

780-444-4545
thewaterford.ca



The Waterford of Summerlea

AROUND THE WATERFORD

Casino	Pharmacies	Liquor Stores
West Edmonton Mall	Grocery Stores	Restaurants
Wal-Mart	Terra Losa Shopping Centre	Medical Clinics
Italian Centre Shop	Dollarama	Transit Stops
Home Depot	Dentist & Denture Clinic	Walking Trails
H & W Produce	Westend Seniors Centre	Banks

ABOUT THE WATERFORD

The Waterford of Summerlea is Edmonton's premier Independent Living Retirement community. Located at 9395-172 Street, we provide custom meal plans, housekeeping, laundry services, transportation and engaging activities to our residents, so they can focus on enjoying life and spending quality time with family and friends. Pricing includes supper served daily in our dining room. Breakfast and Lunch can be added to your plan based on your requirements for an additional fee. Speak to one of our knowledgeable Luxury Lifestyle Coordinators for a personalized quote based on your individual requirements.



For more information, and to view available floor plans, please visit us at thewaterford.ca or call us at **780-444-4545** to set up personalized viewing

The Waterford of Summerlea
9395 172 Street NW, Edmonton, AB

780-444-4545
thewaterford.ca



The Waterford of Summerlea

ENHANCE YOUR STAY

Your experience at The Waterford of Summerlea is about to get even better with our selection of premium services designed to elevate your comfort. Imagine waking up to the aroma of a freshly prepared breakfast that caters to your cravings! Our breakfast and lunch programs offer delectable dishes to kick-start your day and make lunchtime a delight. Leave the hassle of laundry behind - our laundry service ensures your wardrobe stays immaculate. For those seeking a bit more support, our optional assisted services provide personalized care while maintaining your independence. At The Waterford of Summerlea, we believe in creating an experience that revolves around you.

ENHANCEMENT PRICING

Breakfast	\$165/Month	Personal Laundry (2 loads/week)	\$100/Month
Lunch	\$180/Month	Wheelchair Transportation	\$10/Trip
Tray Service (Meal Delivery)	\$5/Delivery	*Additional Housekeeping	\$45/Hour
Covered Parking	\$50/Month	*Personal Care	\$45/Hour
* These services are charged at 30 minute intervals			

JOINING THE WATERFORD OF SUMMERLEA COMMUNITY

Moving into The Waterford of Summerlea is a very straight forward process. Each applicant will be required to complete the Application for Residency form, and your family doctor will be required to complete the Health Assessment form. Once these forms have been reviewed and approved, applicants will meet with our team to select their desired suite, and complete our month to month lease agreement. At this time a damage deposit of \$2000 will be collected, as well as a key deposit of \$50 will be applied for each key requested. An administration fee of \$599 will also be collected at this time. Applicants will be required to set up payment arrangements for monthly rent and any additional charges, either by pre-authorized debit or by credit card. Please note, a 3% credit card fee applies to all credit card transactions.

MORE INFORMATION AVAILABLE

For more information, and to view available floor plans, please visit us at thewaterford.ca or call us at **780-444-4545** to set up personalized viewing

The Waterford of Summerlea
9395 172 Street NW, Edmonton, AB

780-444-4545
thewaterford.ca



SUITE PRICING

SUITE STYLE	One Bedroom "B"	Starting at \$3089
SQUARE FOOTAGE	560 Sq. Ft	

Some of the Inclusions at The Waterford

Full Kitchen
150 HD TV Channels
Emergency Pull Cords
Supper Included

All Utilities Included
In Suite Wi-Fi
Individual Heat & A/C
Afternoon Tea Time & Snacks

Pet Friendly
Weekly Housekeeping
Weekly Linen Service
Shuttle Bus



Suite pricing starts at 3089.00 per month, and includes one meal per day (supper) served in our dining room. Additional meals may be added to your plan for a fee. Second occupant fee applies for more than one resident in each suite. Floor plan above is for illustration purposes and may vary slightly.

The Waterford of Summerlea
9395 172 Street NW, Edmonton, AB

780-444-4545
thewaterford.ca



SUITE PRICING

SUITE STYLE	One Bedroom	Starting at \$3089
SQUARE FOOTAGE	550 Sq. Ft	

Some of the Inclusions at The Waterford

Full Kitchen
150 HD TV Channels
Emergency Pull Cords
Supper Included

All Utilities Included
In Suite Wi-Fi
Individual Heat & A/C
Afternoon Tea Time & Snacks

Pet Friendly
Weekly Housekeeping
Weekly Linen Service
Shuttle Bus



Suite pricing starts at 3089.00 per month, and includes one meal per day (supper) served in our dining room. Additional meals may be added to your plan for a fee. Second occupant fee applies for more than one resident in each suite. Floor plan above is for illustration purposes and may vary slightly.

The Waterford of Summerlea
9395 172 Street NW, Edmonton, AB

780-444-4545
thewaterford.ca



SUITE PRICING

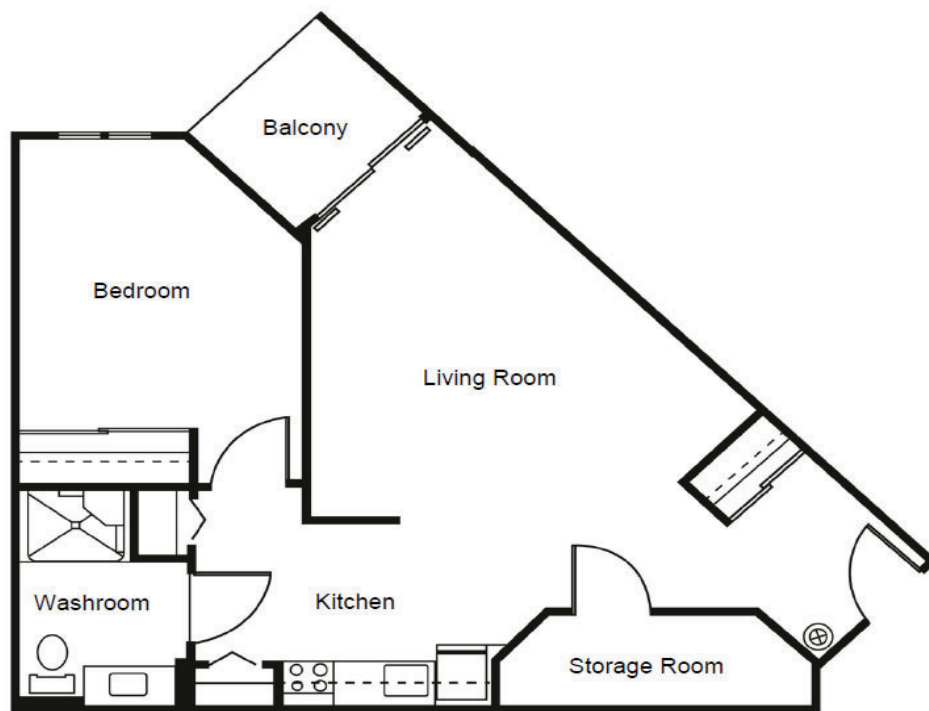
SUITE STYLE	One Bedroom Deluxe	Starting at \$3499
SQUARE FOOTAGE	660 Sq. Ft	

Some of the Inclusions at The Waterford

Full Kitchen
150 HD TV Channels
Emergency Pull Cords
Supper Included

All Utilities Included
In Suite Wi-Fi
Individual Heat & A/C
Afternoon Tea Time & Snacks

Pet Friendly
Weekly Housekeeping
Weekly Linen Service
Shuttle Bus



Suite pricing starts at 3499.00 per month, and includes one meal per day (supper) served in our dining room. Additional meals may be added to your plan for a fee. Second occupant fee applies for more than one resident in each suite. Floor plan above is for illustration purposes and may vary slightly.

The Waterford of Summerlea
9395 172 Street NW, Edmonton, AB

780-444-4545
thewaterford.ca



SUITE PRICING

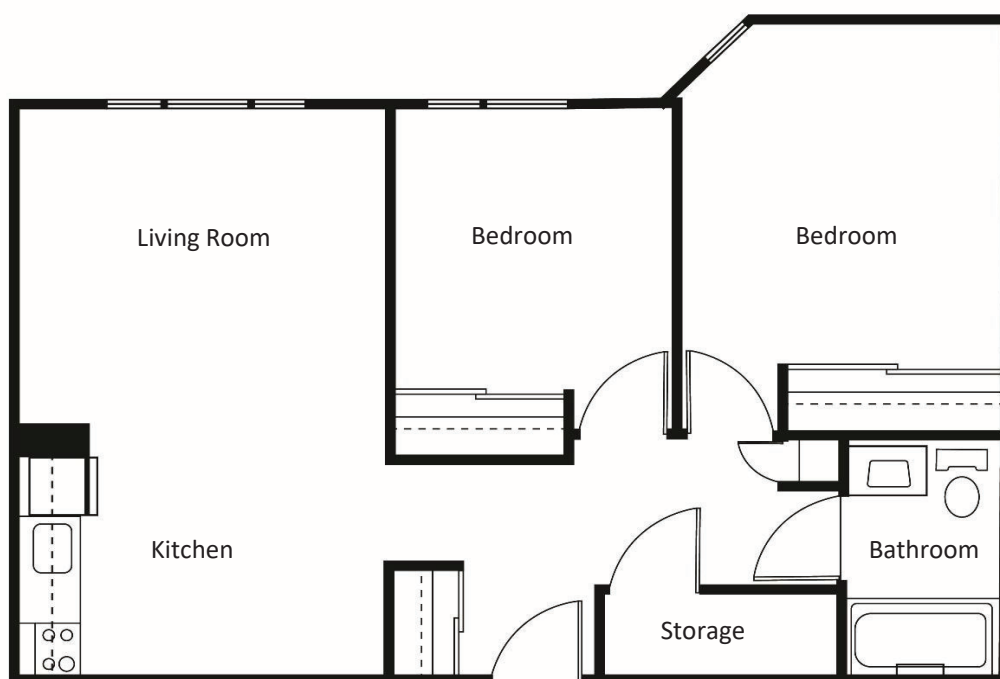
SUITE STYLE	Two Bedroom	Starting at \$4149
SQUARE FOOTAGE	775 Sq. Ft	

Some of the Inclusions at The Waterford

Full Kitchen
150 HD TV Channels
Emergency Pull Cords
Supper Included

All Utilities Included
In Suite Wi-Fi
Individual Heat & A/C
Afternoon Tea Time & Snacks

Pet Friendly
Weekly Housekeeping
Weekly Linen Service
Shuttle Bus



Suite pricing starts at 4149.00 per month, and includes one meal per day (supper) served in our dining room. Additional meals may be added to your plan for a fee. Second occupant fee applies for more than one resident in each suite. Floor plan above is for illustration purposes and may vary slightly.

The Waterford of Summerlea
9395 172 Street NW, Edmonton, AB

780-444-4545
thewaterford.ca

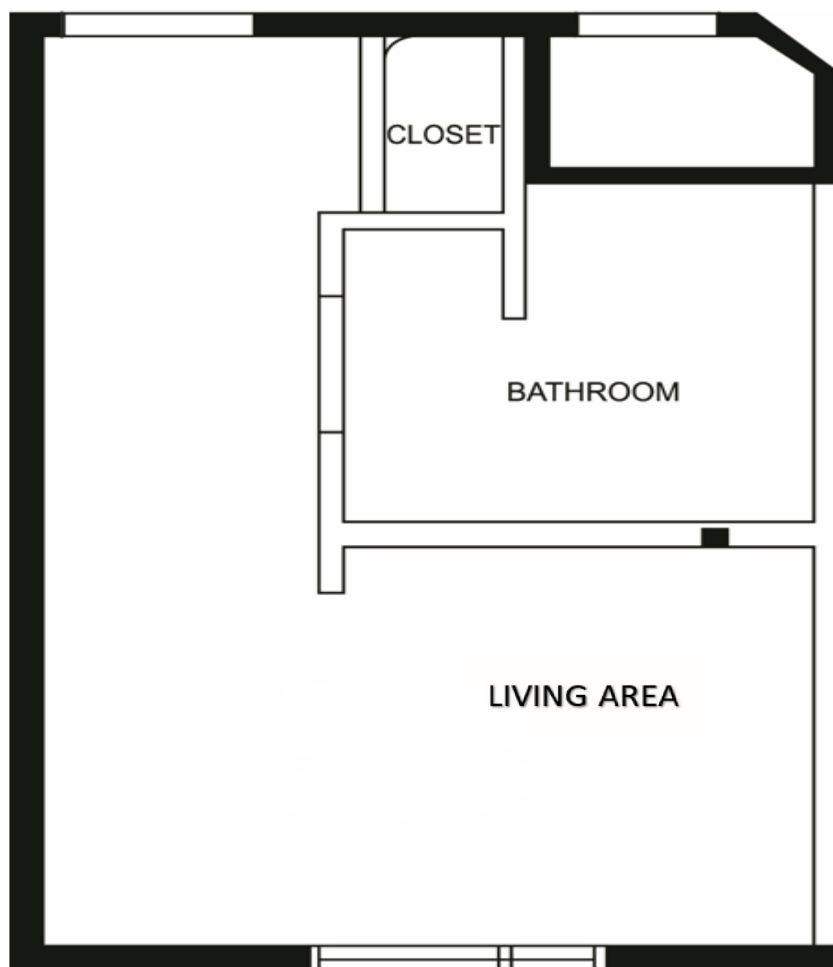


SUITE PRICING

SUITE STYLE	Bachelor Suite	Starting at \$2400
SQUARE FOOTAGE	260 sq. ft.	

Some of the Inclusions at The Waterford

3 Meals Per Day	All Utilities Included	Emergency Pull Cords
150 HD TV Channels	In Suite Wi-Fi	Weekly Housekeeping
Weekly Linen Service	Afternoon Tea Time & Snacks	Weekly Linen Service



Suite pricing starts at 2400.00 per month, and includes three meal per day served in our dining room. Floor plan above is for illustration purposes and may vary slightly.

The Waterford of Summerlea
9395 172 Street NW, Edmonton, AB

780-444-4545
thewaterford.ca